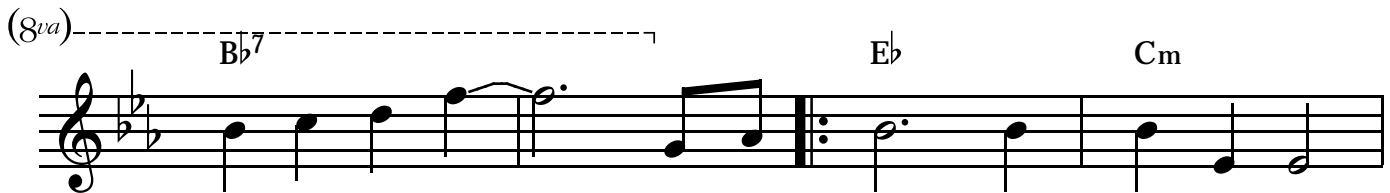
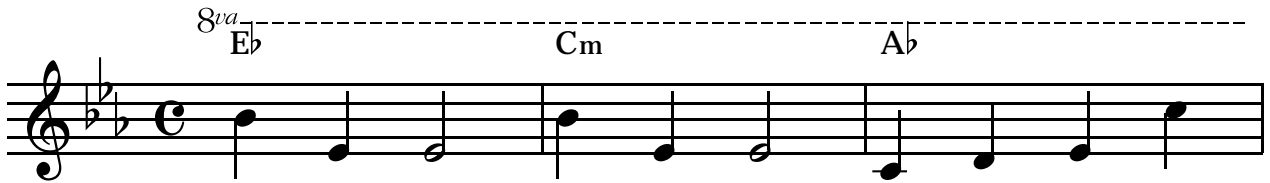


Sending Love at Christmas Time

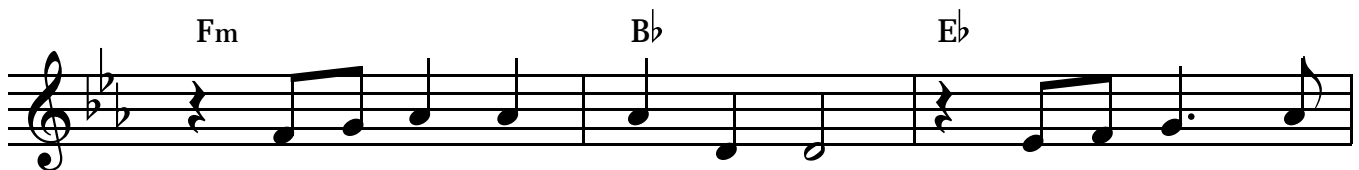
Words and Music by
DON GNECCO

Sending Love at Christmas Time

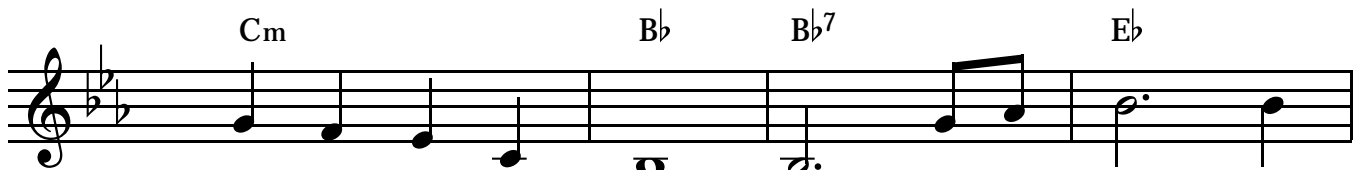
Words and Music by
DON GNECCO



1.Send-ing cards at Christ-mas time
(2.Dec-or) a - tions on each door



is the on - ly way that I'm still in touch with
on - ly make me miss you more, know-ing we're a -



friends so far a - way. _____ Child-ren play - ing
part at Christ-mas time. _____ Can-dle - light in

Cm Fm Bb

in the snow, sing - ing all the carols I know,
win - dow panes, Christ - mas trees and can - dy canes,

Eb Cm Bb Eb Eb7

makes me wish that some - how you were here. _____
ring - ing bells and San - tas ev - 'ry - where. _____

Ab Bb Eb Eb7 Fm

Mu - sic is ev - 'ry - where. _____ Stars and lights on

Bb Eb Eb7 Ab Bb

ev - 'ry Christ - mas tree. _____ I write this greet - ing

Eb Cm Fm Bb

so you'll know that I'm send - ing love at Christ - mas

1. Eb Cm Fm Bb⁷

time . _____ . Dec-or -

2. Eb Cm Eb⁹ Cm Eb

time. Oh, the won-d'rous star, high a - top my tree,

Ab Cm Fm

guid - ing me this Christ - mas; I'm wish - ing you were

Bb Ab Bb Eb

here be - side me. I write this greet - ing so you'll know that

Cm Fm Bb Eb C⁷

I'm send - ing love at Christ - mas time. _____

B \flat C F F⁷ Gm

Mu - sic is ev - 'ry - where. _____ Stars and lights on

C F F⁷ B \flat C

ev - 'ry Christ-mas tree. _____ I write this greet - ing

F Dm Gm C

so you'll know that I'm send - ing love at Christ - mas

F Dm *Rit.* Gm C F

time. _____ Send-ing love at Christ - mas time. _____